

Gholam Hossein Shahraki*, Yasuj University of Medical Sciences, Iran

* shahraki.gh@gmail.com

It reported approximately 90% of cutaneous leishmaniasis occurs in Iran, Syria, Saudi Arabia, Afghanistan, Algeria, Peru and Brazil. In Iran, CL is endemic in south, east north and some part of the center of Iran. Province of Kohgiluyeh va Boyerahmad located in southwestern of Iran, surrounded by two important provinces for focuses of cutaneous leishmaniasis.

This study was carried out among referred patients to health centers of Kohgiluyeh va Boyerahmad province during 2007-2012.

Results

➤ Annually recorded data from CL infected patients are showed in Figures 1 and 2. The result (Figure 1) shows around 165-169% increasing in prevalence of infestation after one and 5 years (2008 and 2011) of survey.

➤ The most rate of infection related to area population is recorded for two cities (Bahmaie and Kohgiluyeh) with the highest average temperature throughout the province.

Figure 2: Prevalence of CL infected patients referred to health centers of five cities of Kohgiluyeh va Boyerahmad province regarding to city populations during 2007- 2012

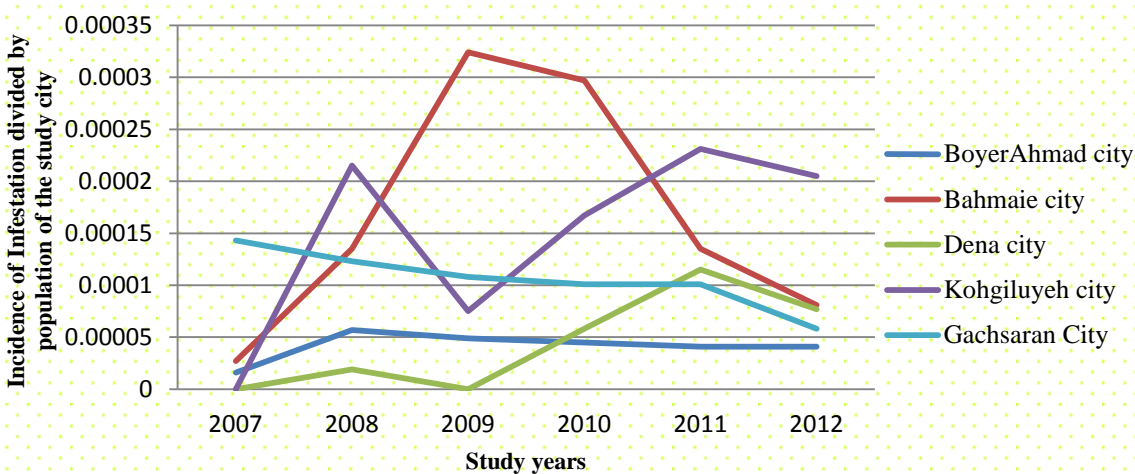
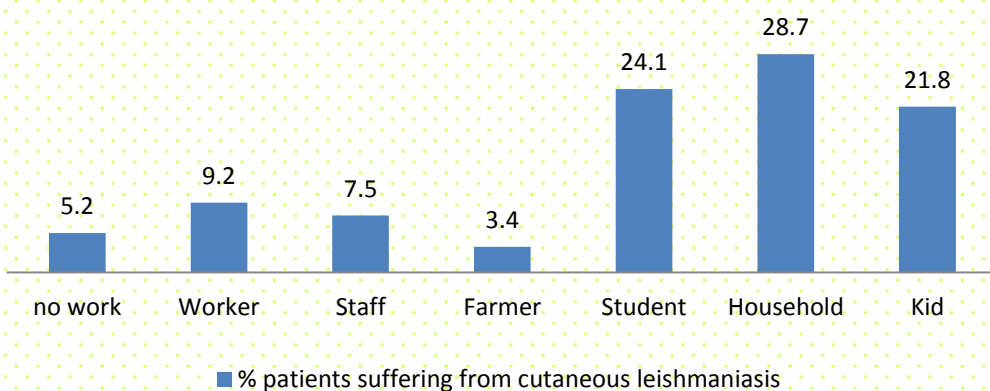


Figure 4: Occupation distribution of patients suffering from cutaneous leishmaniasis in KB province, Iran, during 2010-2012



➤ Face was the most common site of involvement (36%), and then Hand (33%), and legs (18%). Moreover, only 4.8% had history of scar in their body

➤ Study did not show significant (CI=95%) correlation between CL and sex and also age of patients.

➤ In conclusion annual report of cutaneous leishmaniasis during last 6 years showed this province need more attention especially for hot zones (or cities) which are suitable to be focus of leishmaniasis. However results of age and job distribution and history of traveling to infestation zones for the most CL patients (57% Vs 43%) shows the most infested over the province.

Figure 1: Annual prevalence of cutaneous leishmaniasis (recorded in health centers) in Kohgiluyeh va Boyerahmad province, Iran during 2007- 2012



➤ Moreover, from 194 recorded data, the most patients (53%) had travel history to infested areas and located in rural areas (63%). However 54% of referred infested persons were female.

➤ The most of CL infected persons (54%) had more than 21 years old (Figure 3) and were household (Figure 4).

Figure 3: Age distribution of patients suffering from cutaneous leishmaniasis in KB province, Iran, during 2010-2012

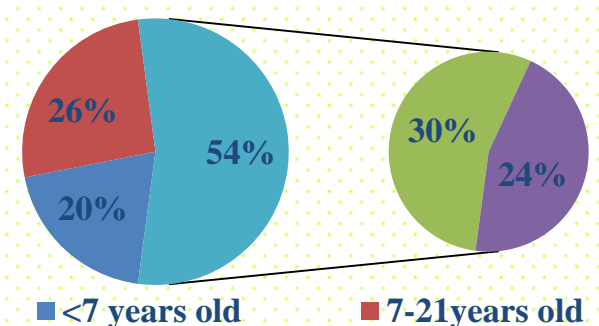


Figure 5: Prevalence of CL infected site of patients in KB province, Iran, during 2010-2012

