



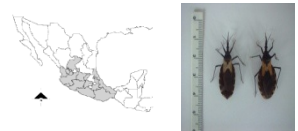
Triatoma barberi (0-2000 masl)
♀ 18.5-20 ♂ 16-18 mm



Triatoma dimidiata (0-2369 masl)
♀ 24.5-35.0 ♂ 24-32.0 mm



Meccus phyllosomus (10-1200 masl)
♀ 29-39.5 ♂ 26.5-38.0 mm



Meccus pallidipennis (200-1580 masl)
♀ 32-35 ♂ 31-34 mm



Meccus mazzottii (0-750 masl)
♀ 34.0 ♂ 33.0 mm



Meccus picturatus (250-1200 masl)
♀ 32-33 ♂ 30.5-32.0 mm



Meccus longipennis (200-1500 masl)
♀ 30-37 ♂ 29-34 mm



Triatoma gerstaeckeri (900-1380 masl)
♀ 24.0-28.5 ♂ 23.0-26.0 mm



Triatoma mexicana (1200-1800 masl)
♀ 25.4 ♂ 23.2-24.8



Triatoma rubida (200-1800 masl)
♀ 19.5-23.0 ♂ 15.5-20.0 mm



Dipetalogaster maxima (0-10 masl)
♀ 41-42 and ♂ 33-35 mm



Panstrongylus rufotuberculatus (50-600 masl)
♀ 25-28 ♂ 24-27 mm



Rhodnius prolixus (600-640 masl)
♀ 19.5-21.5 ♂ 17.5-20.0 mm

	<i>Triatoma dimidiata</i> *	<i>Triatoma barberi</i> *	<i>Meccus pallidipennis</i> *	<i>Meccus longipennis</i>
Flora	Dry and wet forest	Dry and wet forest	Wet forest	-----
Fototaxia	negative	negative	positive	negative
Intradomestic	yes	yes	yes	yes
Feeding and postfeeding time	10 – 20 min	Durante la alimentación	20 – 30 min	-----
Metaciclogenic index	15%	76%	26%	-----
Natural infection index	10%	25 – 85%	14 – 42 %	30%

	<i>Triatoma dimidiata</i> *	<i>Triatoma barberi</i> *	<i>M. pallidipennis</i> *	<i>M. longipennis</i>
Distribution	In 16 states	In 12 states	In 13 states	In 9 states
Size	♂ 24.32-32 mm ♀ 24.5-35.0 mm	♂ 16-18 mm ♀ 18.5-20 mm	♂ 31-34 mm ♀ 32-35 mm	♂ 29-34 mm ♀ 30-37 mm
Development of life cycle (egg-adult)	520 days	523 days	167 days	402 days
Ecotopes	Intradomestic (in ground)	Intradomestic (in wall)	Peridomestic "Tecorrales" (sites where sleep animals), stacks of firewood, waste or stones	Peridomestic "Tecorrales" Hen house
Altitude	0 – 1700 masl	0 – 2200 masl	0 – 1580 masl	200 – 1500 masl
Climate	Dry and wet	Dry	Dry and wet	-----

* <http://unibio.unam.mx>. Author Ernesto Barrera Vargas