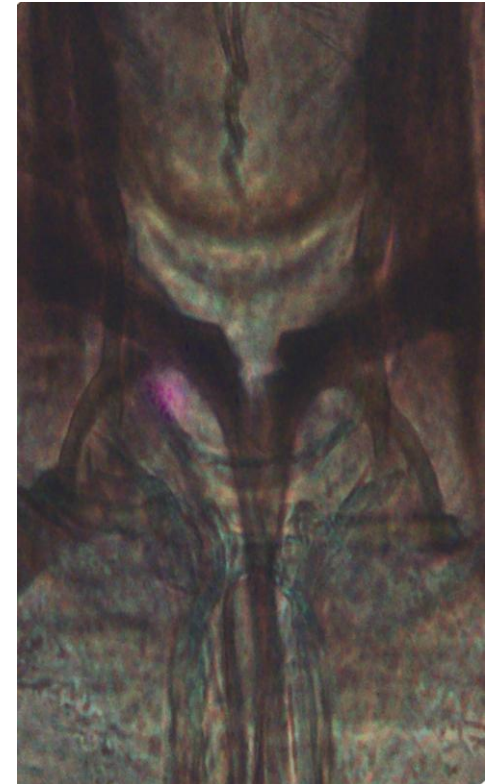


Fig : 7 *Se. (Vij.) barshi*

Female Cibarium with strongly thick well developed. bell like shaped and teeth absent,
40x.



198.0µm

Fig:8 Se. (*Vij.*) *barshi*

Female pharynx with light brown and green in colour teeth present, 40x.



182.0µm

Fig :9 Se. (Vij.) barshi

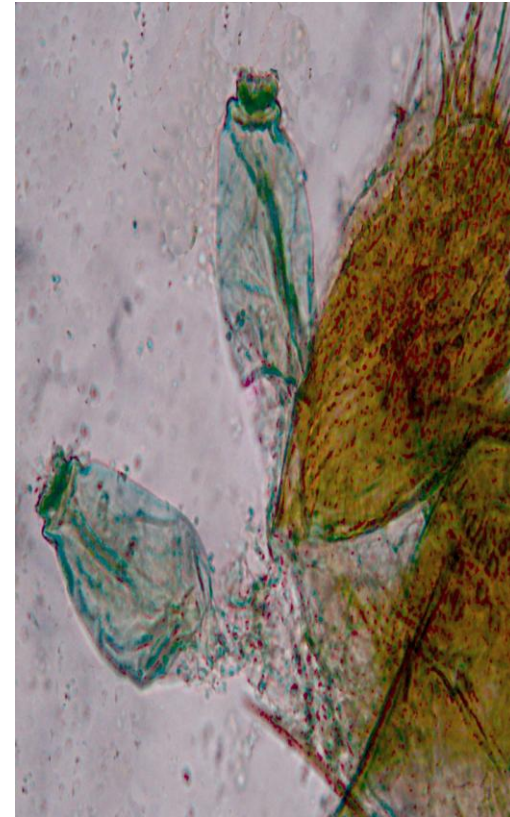
Female Antennal segment 4 &5 with sky blue band near the papilla and ascoid, 40x.



176.0µm

Fig : 10 Se. (Vij.) barshi

Female Spermatheca with green in colour; lamp shaped with apical disc having about 9 comb like teeth and with about 8 hairs well developed; with about 10 unique vertical thick lines of cuticular folds along the length of spermathecae, 40x.



62. m