

Fig3:Section through Corpus allatum of normal larvae of *S. littoralis* .Nucleus(1),Rough endoplasmic reticulum(RER(2),mitochondria(3),Glg body(4),

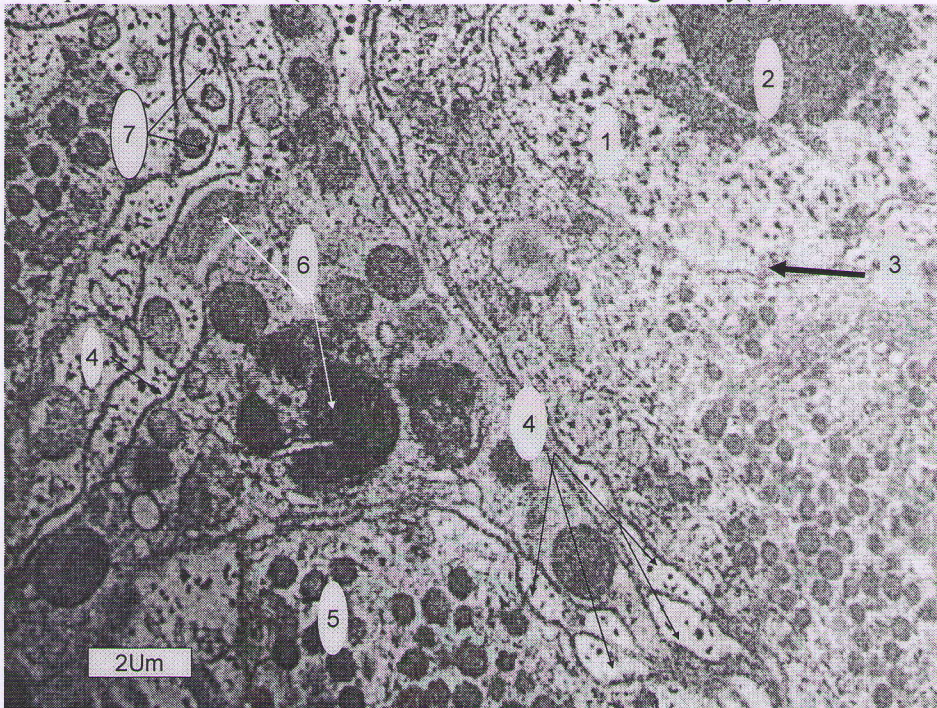


Fig3A:Section through Corpus allatum of fed larvae of *S.littoralis* showing nuclear chromatin(1),nucleolus(2), irregular nuclear membrane(3),dendrites(4),secretory droplets(5),twisted mitochondria(6). Autophagic vacuoles(7)

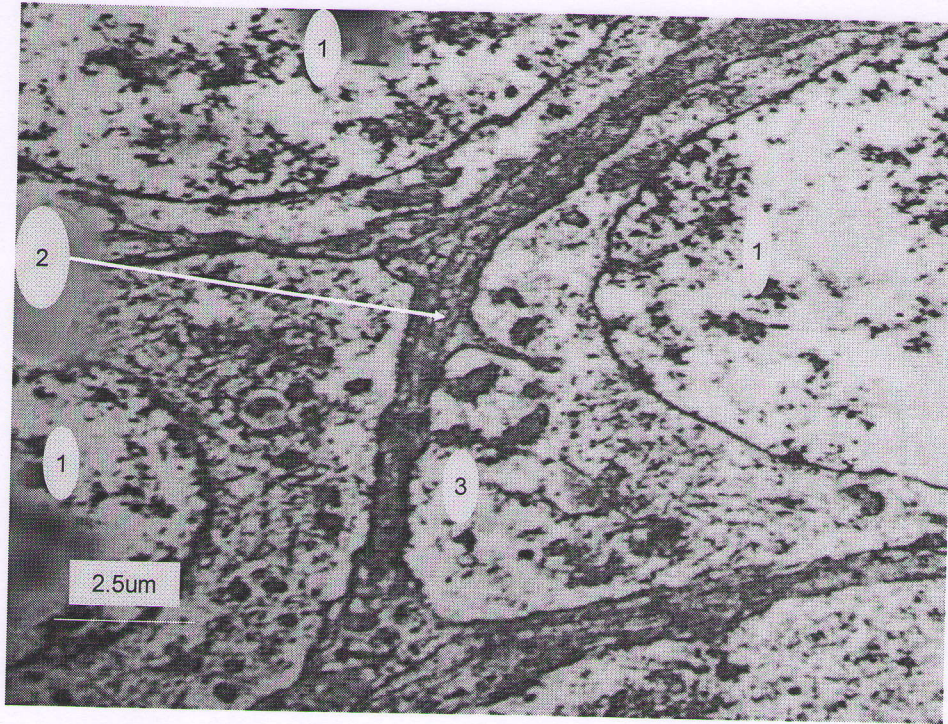


Fig4:Section through Prothracic gland of normal *S. littoralis* larvae.Nucleus(1),cell membrane(2),mitochondria(3).

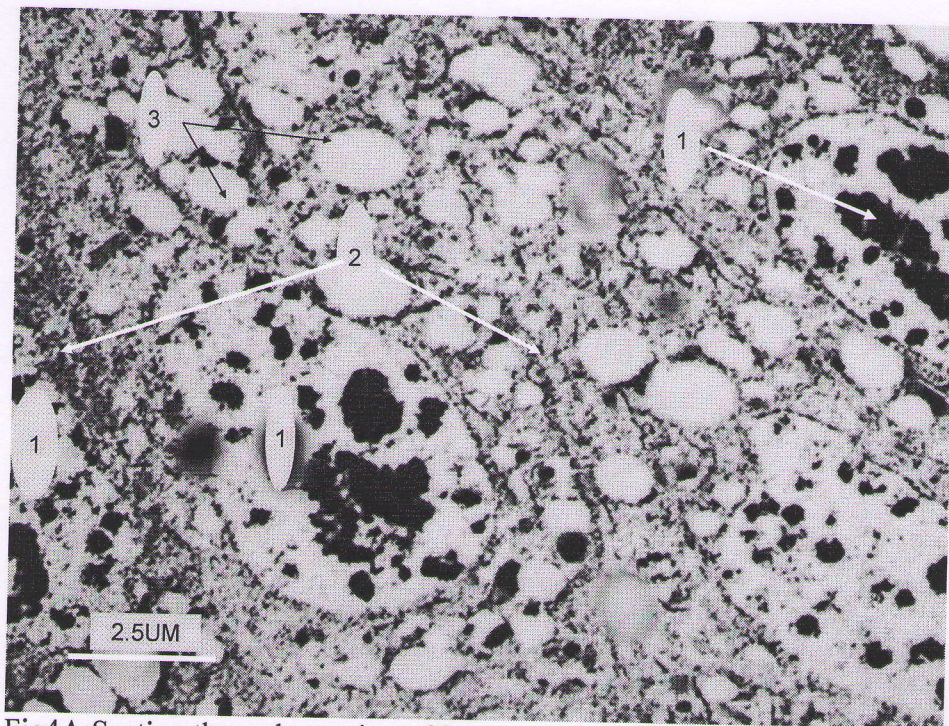


Fig4A:Section through portion of Prothracic gland of fed *S.littoralis* larvae,showing nuclear chromatin(1),degeneration of cell membrane(2),vacuoles(3).

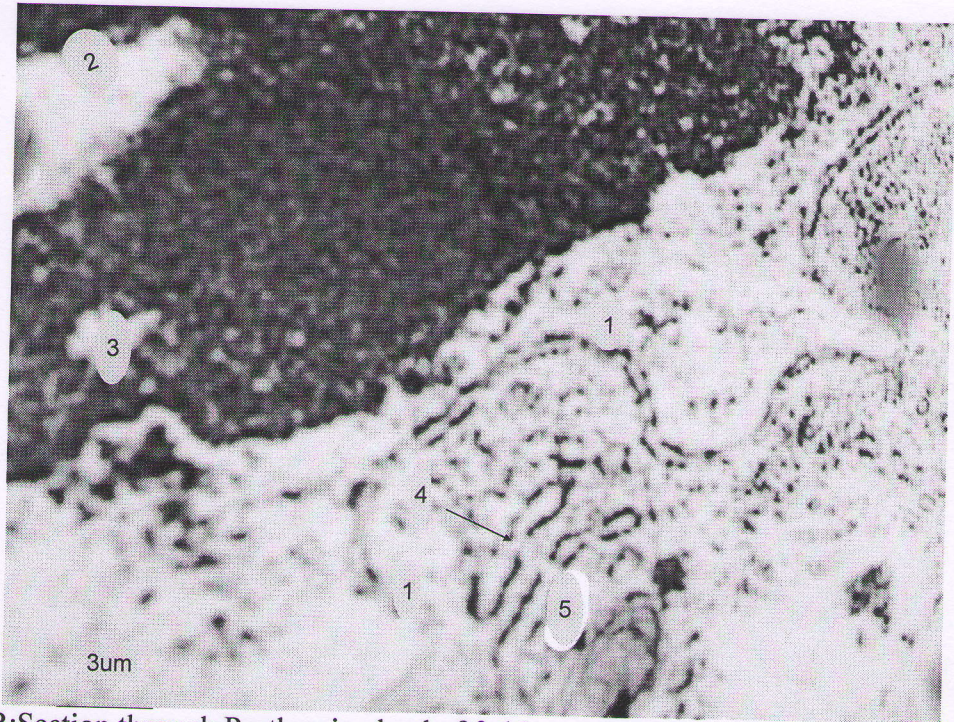


Fig4B:Section through Prothracic gland of fed larvae of *S.littoralis*, clearing irregular nuclear membrane(1), fat droplet(2),clumping of nuclear chromatin(3),golgi body(4),lysosome(5).